

# Bison Conservation: The Habitat Issue

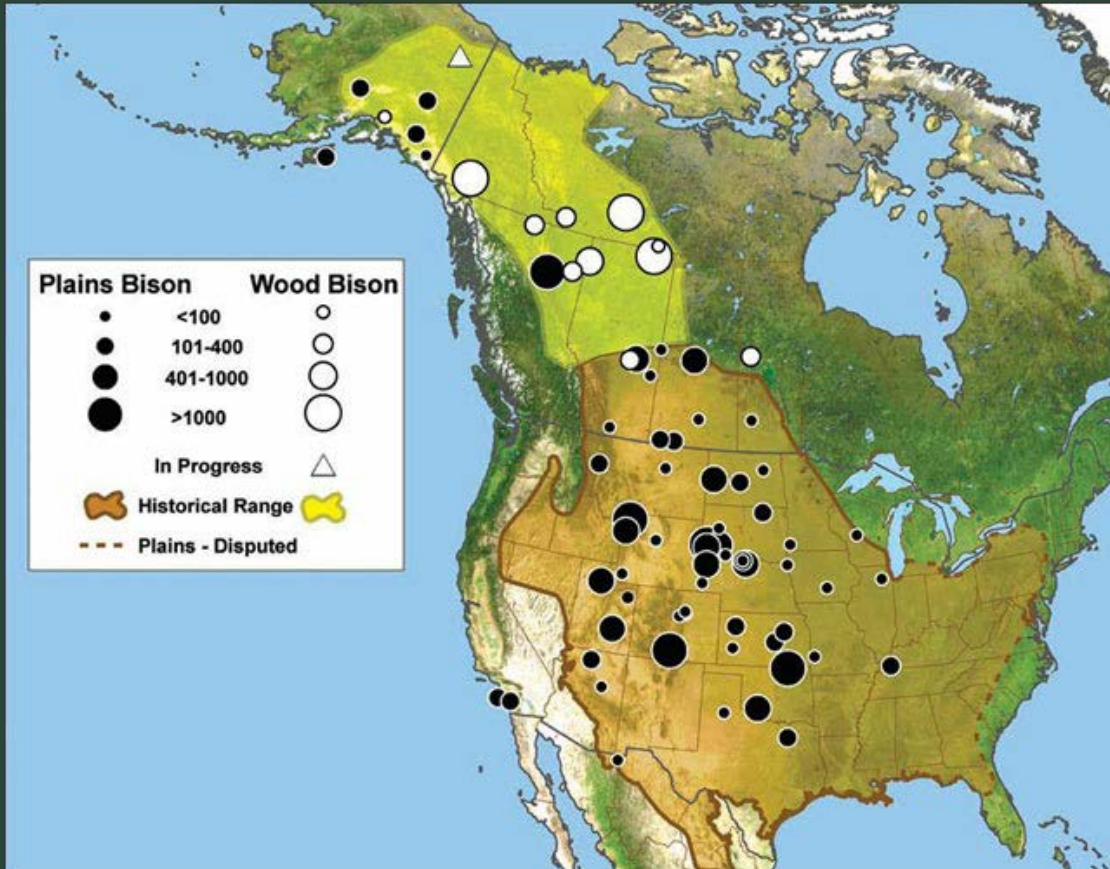


Seutin et al.  
Wildlife Trilateral Meeting  
19 May 2016





# Where are bison?



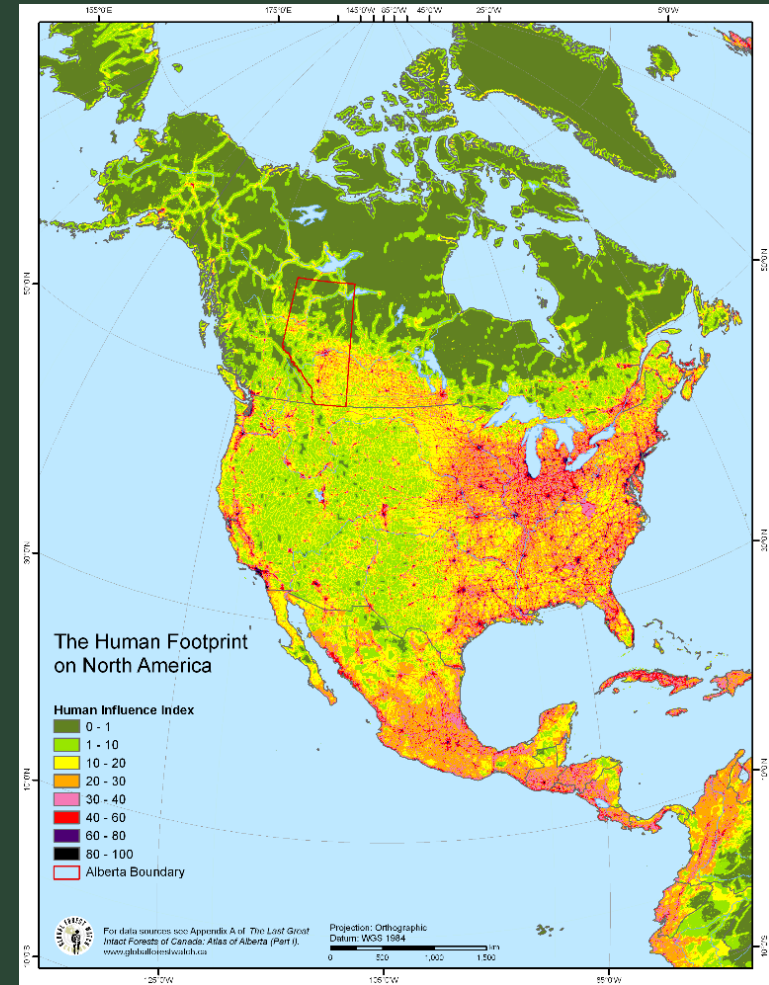
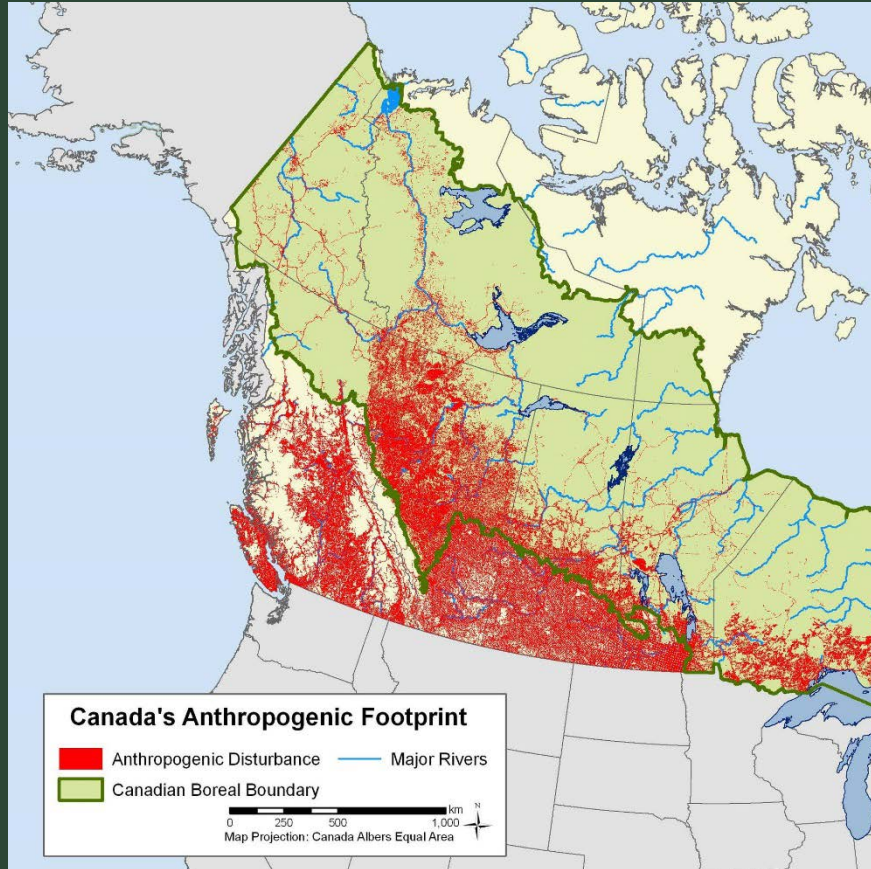
## Habitat Patches:

- Small or large
- Fenced or open
- Supplemented or self
- Predators or not
- Etc.





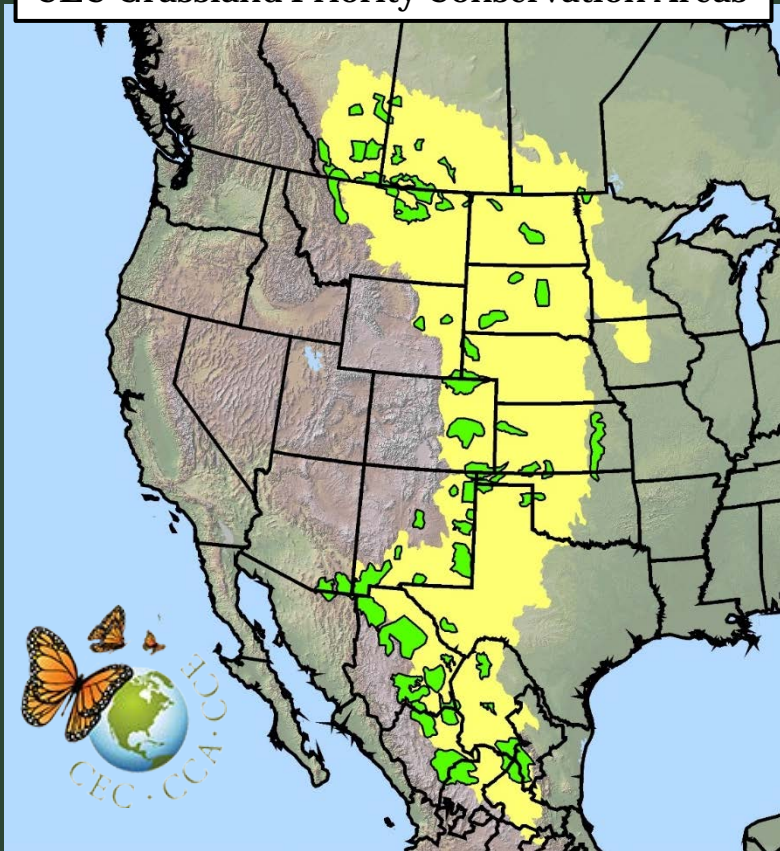
# Habitat Conditions



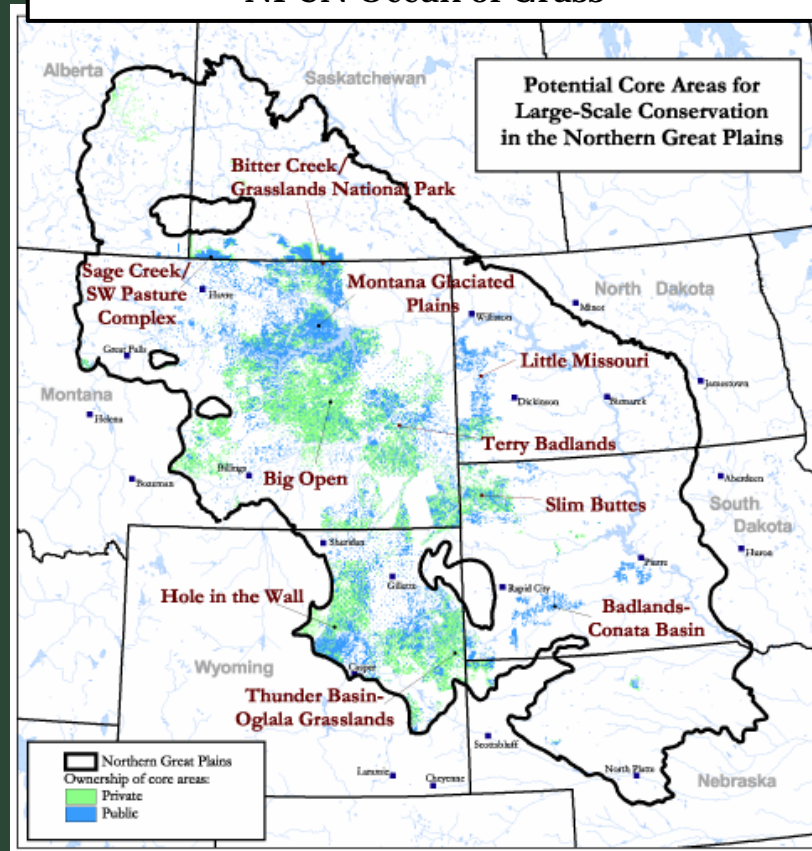


# Conservation Potential

## CEC Grassland Priority Conservation Areas

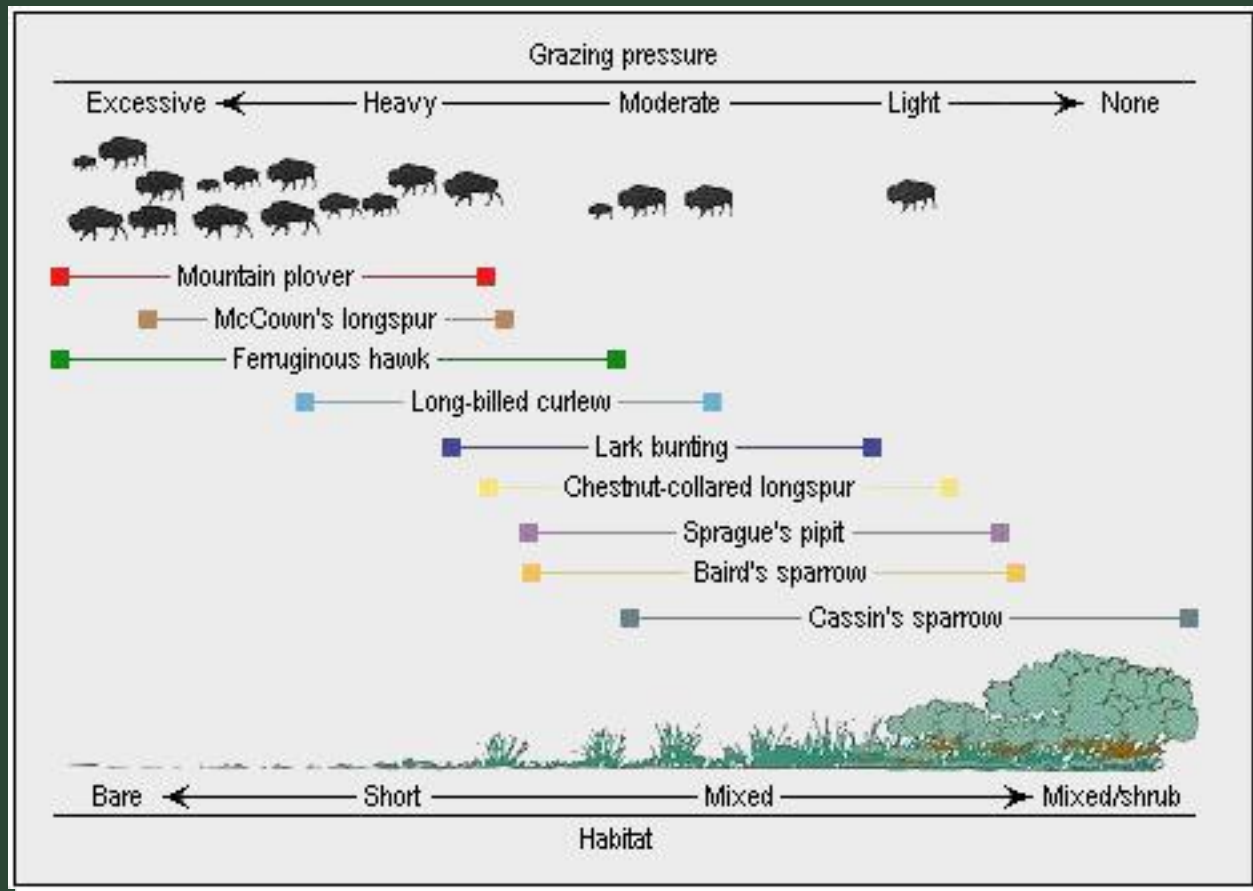


## NPCN Ocean of Grass





# Conservation Objective(s)





# Bison Habitat Conservation

When establishing new bison habitat patches or expanding existing patches:

- What habitat characteristics are we targeting?
- Are there ecological pre-requisites?
- How do we factor in co-benefits?



# An Expert's View to Bison Habitat Conservation

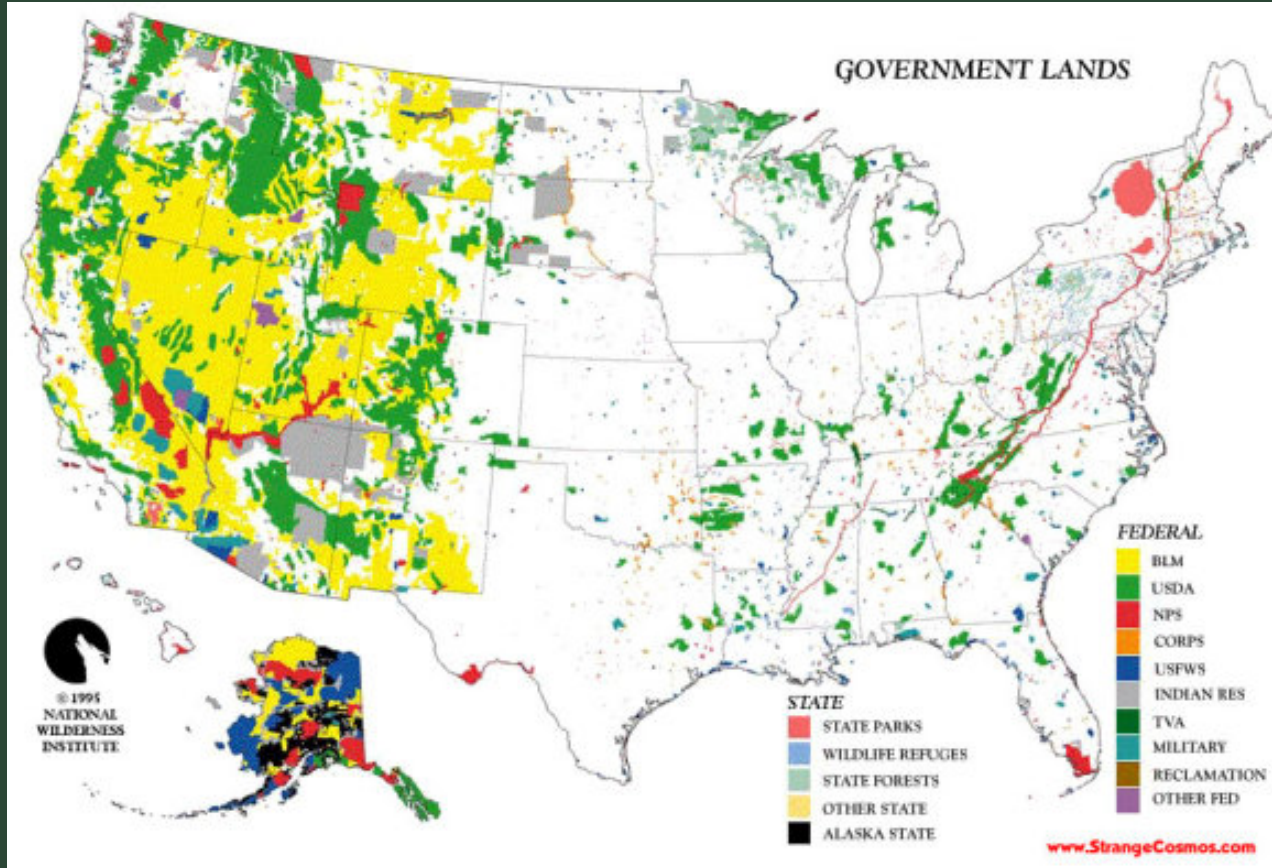
## Factors in “wild by nature” assessment by COSEWIC

Population structure	Typical “wild” sex ratio is maintained, culling emulates natural mortality
<b>Supplemental feeding</b> and disease treatment	No supplemental feeding, interventions re: introduced disease do not affect ecological/evolutionary processes
<b>Movement and habitat heterogeneity</b>	Not confined to areas $<200 \text{ km}^2$ , densities are suitable for social interactions, and space allows for seasonal movements
<b>Predation</b>	Predators are present as a selective force





# A Social View to Bison Habitat Conservation







# A Social View to Bison Habitat Conservation

The condition:

Respect both the interests of land owners and agricultural production and those wishing to conserve and protect large intact grassland landscapes and free roaming herds of bison

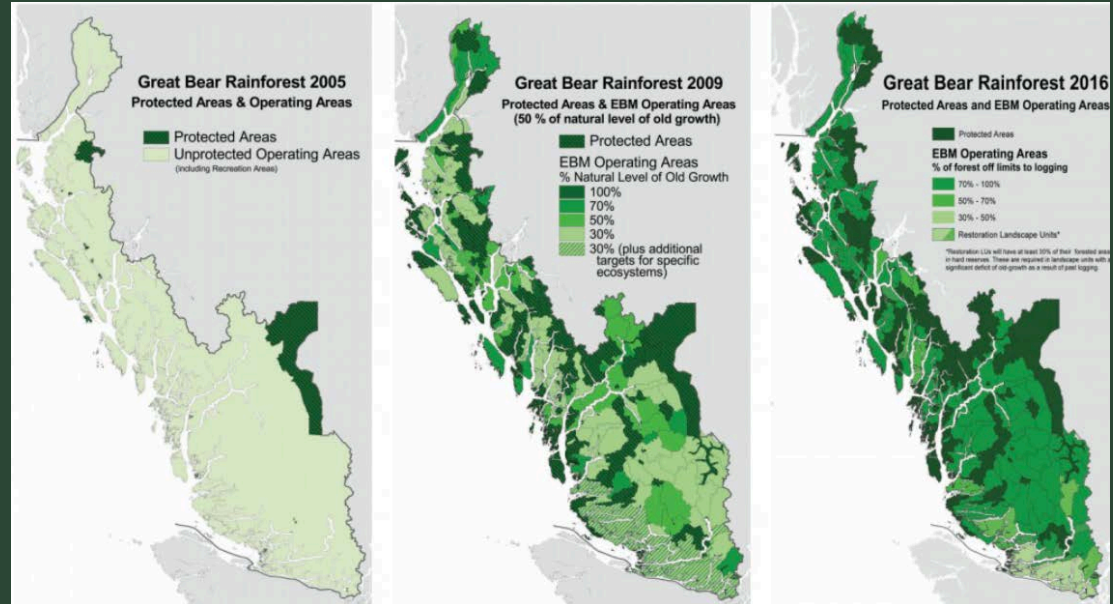
Enabling mechanisms:

Awareness and engagement; facilitation; certification; incentives; monitoring; recognition



# Large Scale Habitat Conservation Successes

- Integrated land use planning focused on an iconic wildlife species and its habitat – the Spirit Bear and rainforests;
- Success resulted in 85% protection (3.1 million hectares) with 15% available for logging under strict Ecosystem Based Management (EBM) principles.





Be positive!

