

XXI ANNUAL MEETING OF THE CANADA/MEXICO/UNITED STATES
TRILATERAL COMMITTEE FOR WILDLIFE AND ECOSYSTEM CONSERVATION
AND MANAGEMENT
MAY 16-19, 2016
OTTAWA, ONTARIO, CANADA

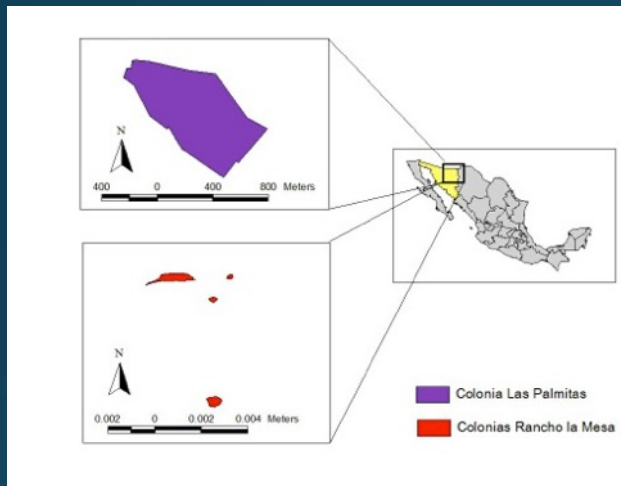


**Update on Black-tailed prairie dog conservation:
Grassland restoration, health and demographic
assessment - MEXICO**

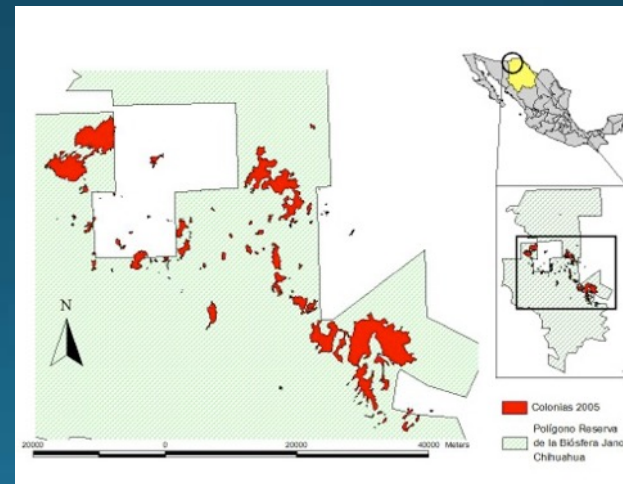


Update on Black-tailed prairie dog conservation: Grassland restoration, health and demographic assessment - MEXICO

Black tailed prairie dog (*Cynomys ludovicianus*) in México



SONORA
>100 Ha



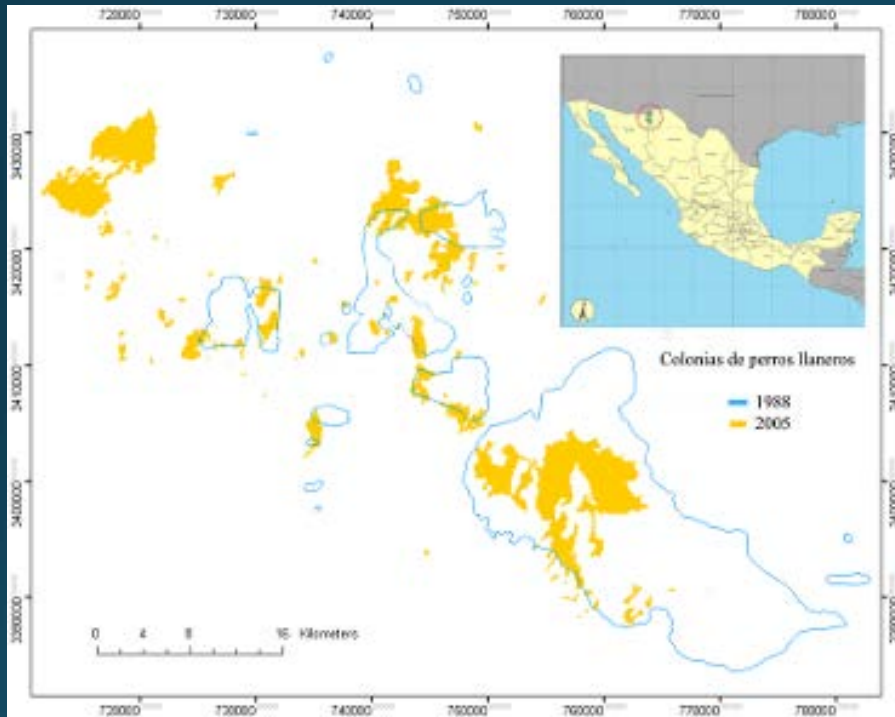
CHIHUAHUA
2,500 Ha

PROCER 2013

Update on Black-tailed prairie dog conservation: Grassland restoration, health and demographic assessment - MEXICO

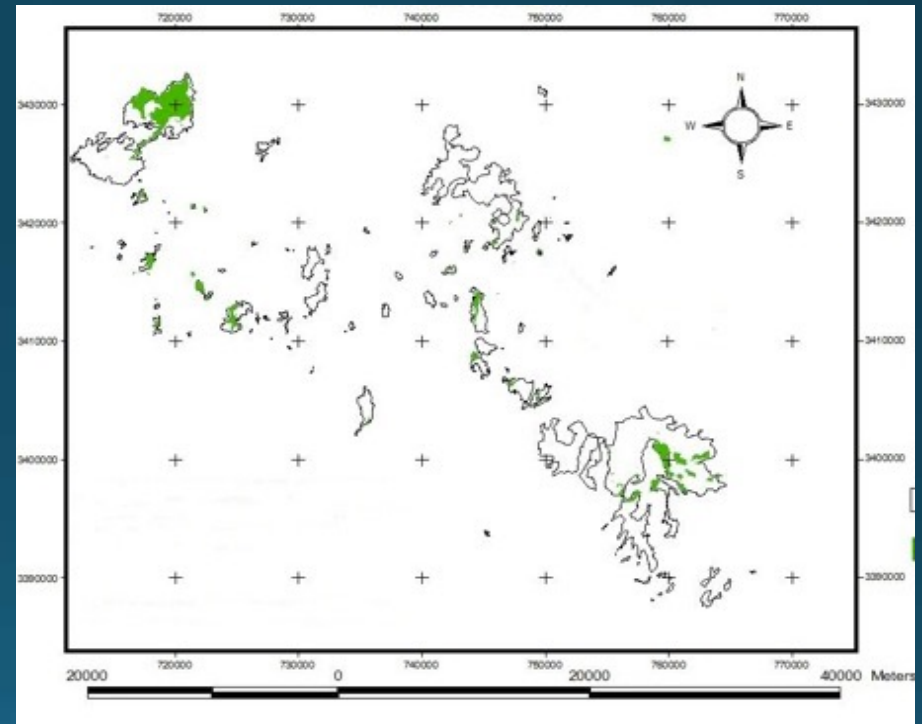
Prairie dog complex

1995 - 2005



Ceballos et al. 2010

2005 - 2013

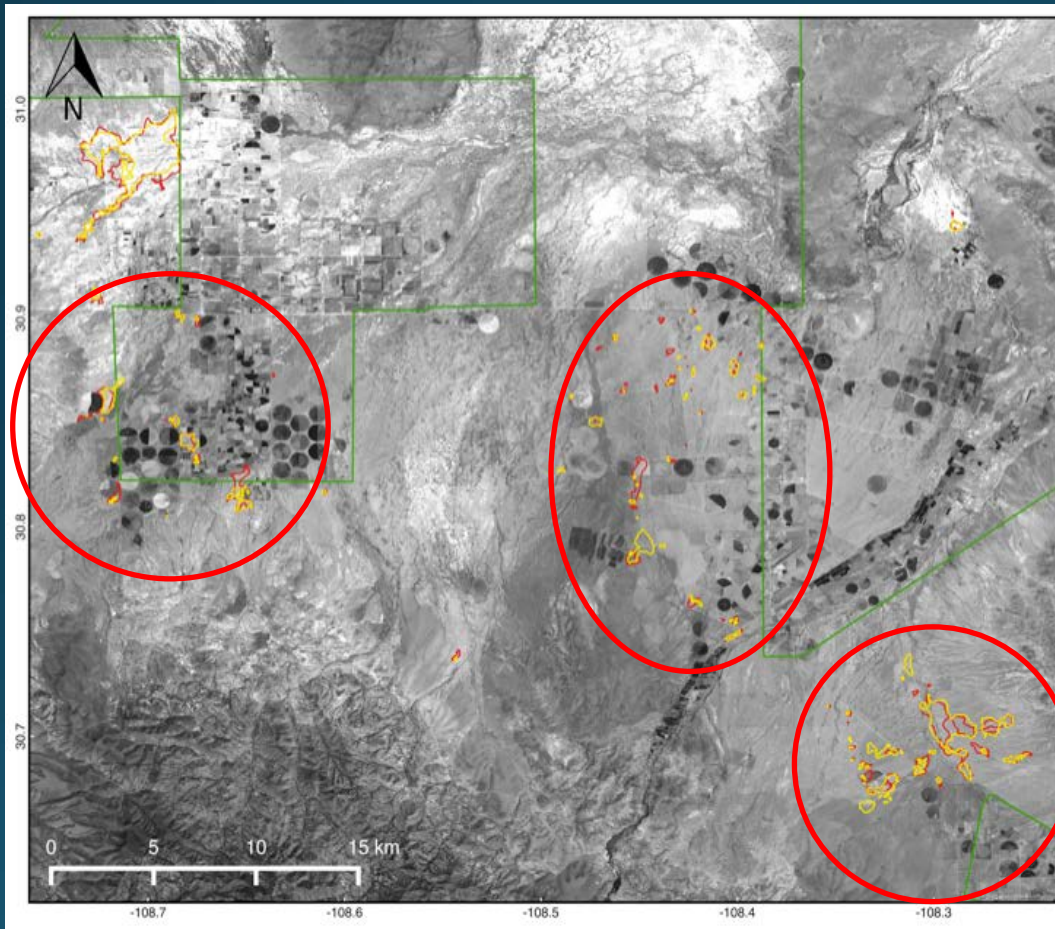


PROCER 2014

Complex size reduction
>14,800 Ha to 2,500 Ha

Update on Black-tailed prairie dog conservation: Grassland restoration, health and demographic assessment - MEXICO

Prairie dog complex between 2013 and 2015



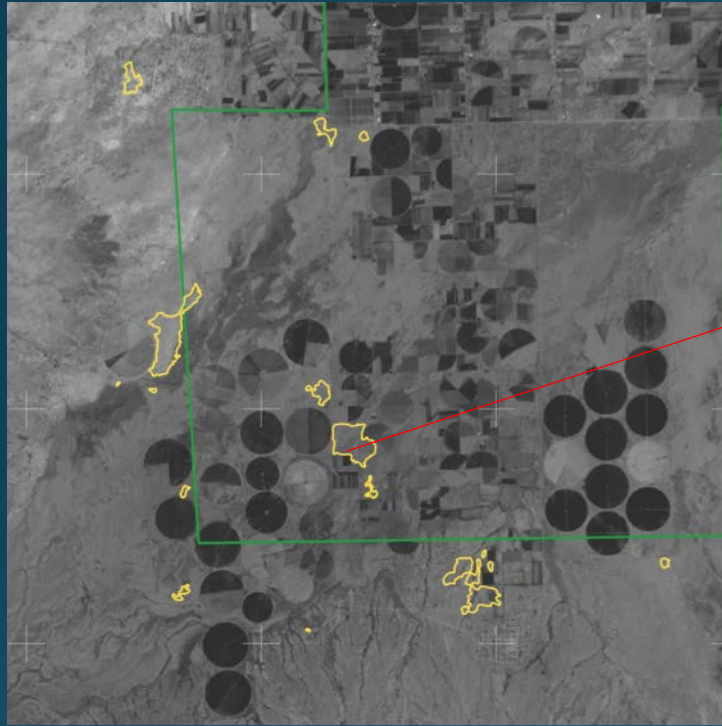
- 85 colonies
- 2,037.6 hectares
- Average size 24 Ha
- 0.2 to 800 Ha

- What to do?

- Three sub-complexes

Update on Black-tailed prairie dog conservation: Grassland restoration, health and demographic assessment - MEXICO

Translocation efforts - 2016



Source colonies



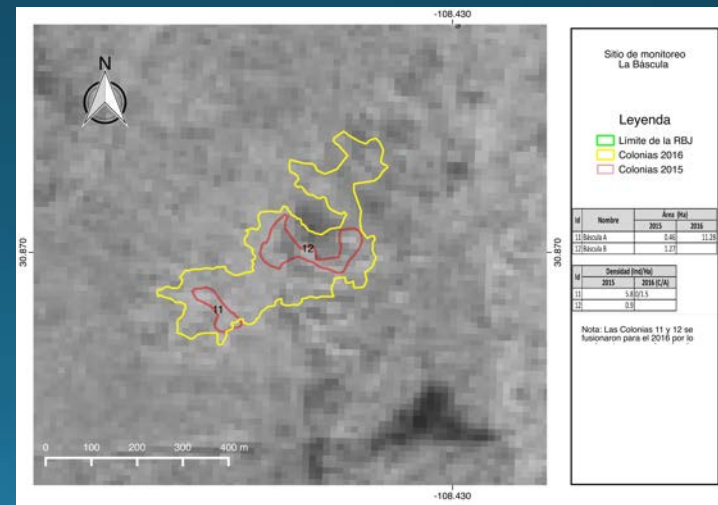
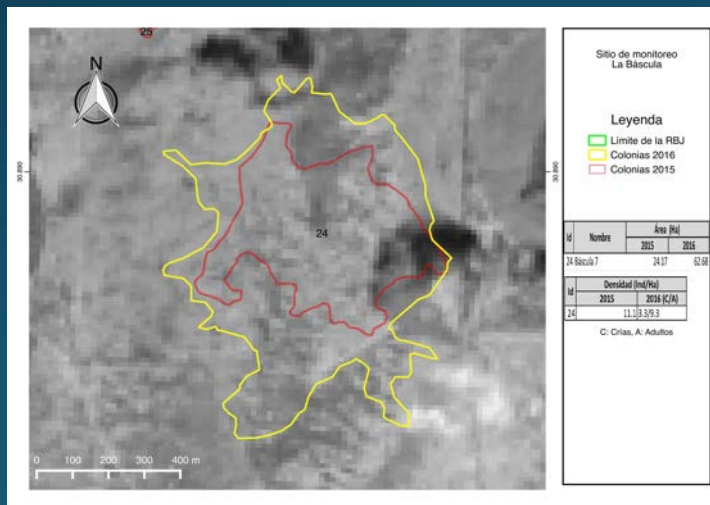
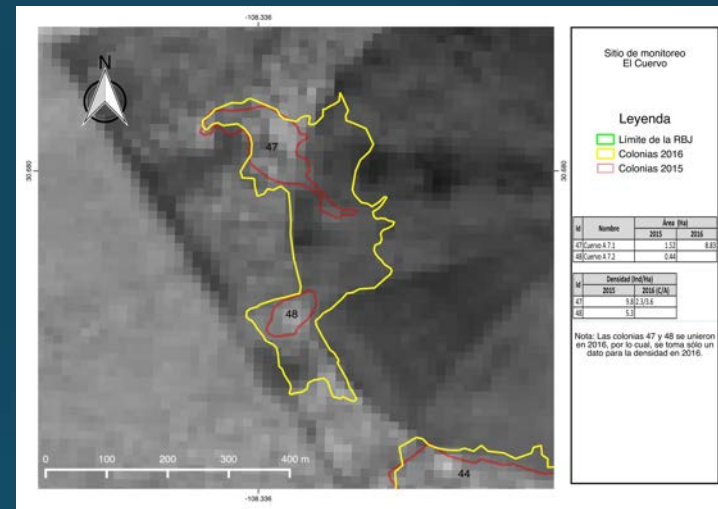
Sink colonies



Update on Black-tailed prairie dog conservation: Grassland restoration, health and demographic assessment - MEXICO

Monitoring efforts 2016

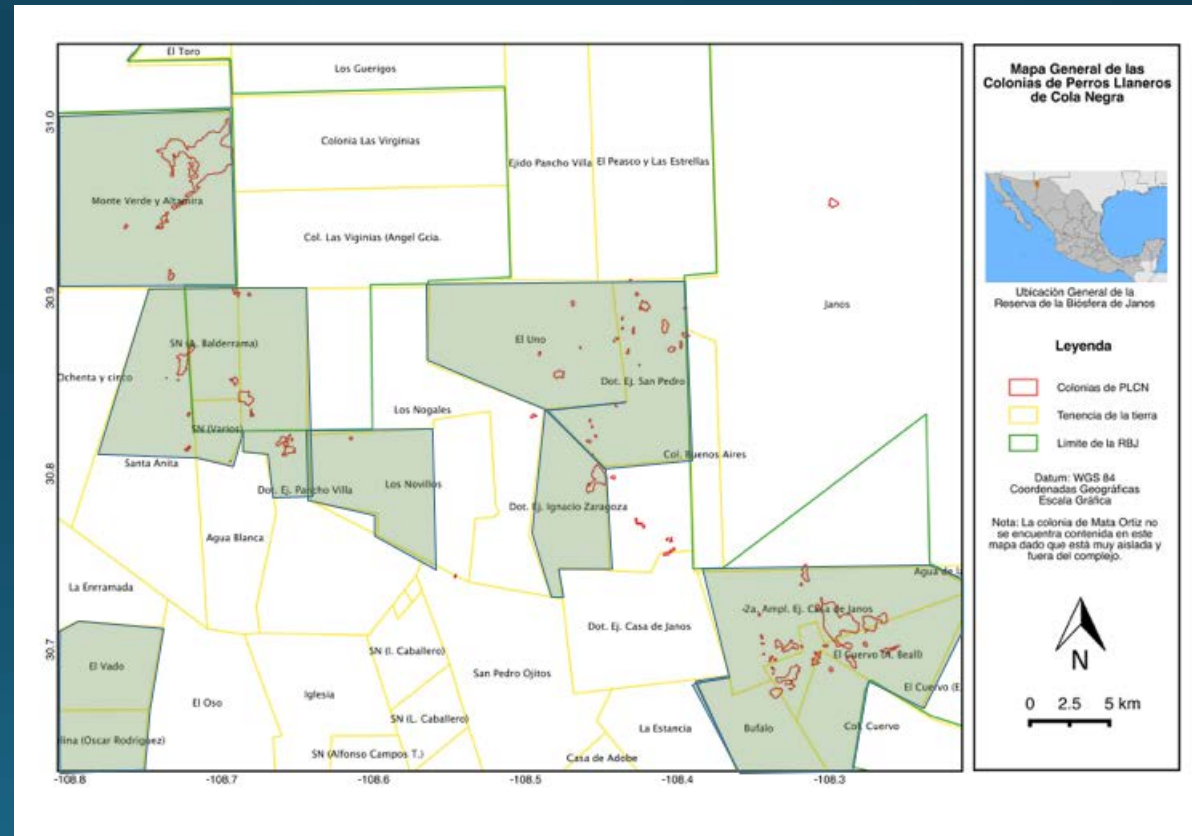
- A general increase in colony size. Approx. 30%
- + Dispersion
- + Births



Update on Black-tailed prairie dog conservation: Grassland restoration, health and demographic assessment - MEXICO

Owner involvement

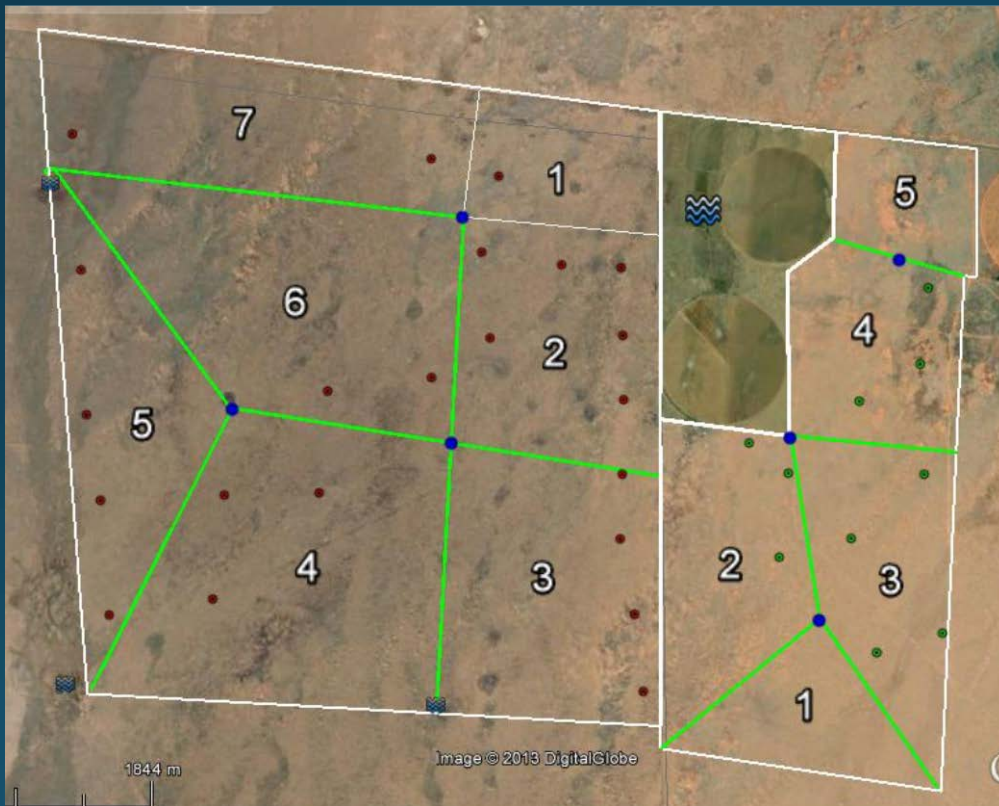
- Private ranches (5)
- Communal land (ejidos-5)
- Mennonite colonies (3)
- Incentives for Conservation (PSA)
- Instead...
- Training and consulting on sustainable cattle management
- Recovery of native grasses
- Ecological Restoration.
- Training for local producers.



15 properties within any program

Update on Black-tailed prairie dog conservation: Grassland restoration, health and demographic assessment - MEXICO

Training and consulting on sustainable cattle Ejido San Pedro, Janos



Update on Black-tailed prairie dog conservation: Grassland restoration, health and demographic assessment - MEXICO

Training and consulting on sustainable cattle

Improving infrastructure and cattle management in conjunction with:

- Grupo Ecológico Sierra Gorda A.C.
- IMC Vida Silvestre A.C.
- Cuenca Los Ojos A.C.
- Local producers

- Rancho El Uno 1,600 HA
- Ejido San Pedro 900 Ha
- Ejido Los Pinos 2,000 Ha

- Adaptive management



PROCER 2015

Is sustainable cattle management a better option for local producers and biodiversity?

Update on Black-tailed prairie dog conservation: Grassland restoration, health and demographic assessment - MEXICO

Partial incentive programs Financial analysis



40 to 50 % of inversion
is provided by
landowners.

Update on Black-tailed prairie dog conservation: Grassland restoration, health and demographic assessment - MEXICO

Training for local leaders

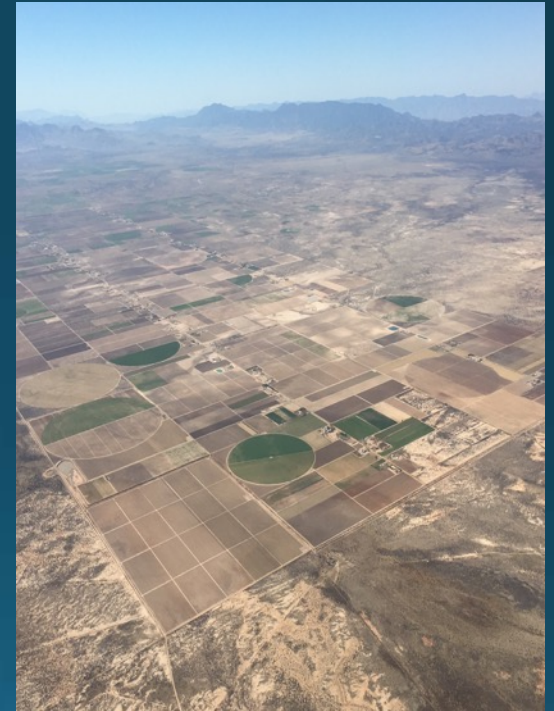


Grupo Ecológico Sierra Gorda A.C.
Sustainable management of ecosystems
Alternative activities
Financial advise

Cooperativa San Pedro
Sustainable cattle management
Habitat restoration

Update on Black-tailed prairie dog conservation: Grassland restoration, health
and demographic assessment - MEXICO

Illegal grassland conversion.....



April 2016

Update on Black-tailed prairie dog conservation: Grassland restoration, health and demographic assessment - MEXICO

Illegal grassland conversion



April 2016



Transgenic cotton

Chili

Beans

Maize

vs

ALTERNATIVE??

Update on Black-tailed prairie dog conservation: Grassland restoration, health and demographic assessment - MEXICO

Establishment native grass seed bank.



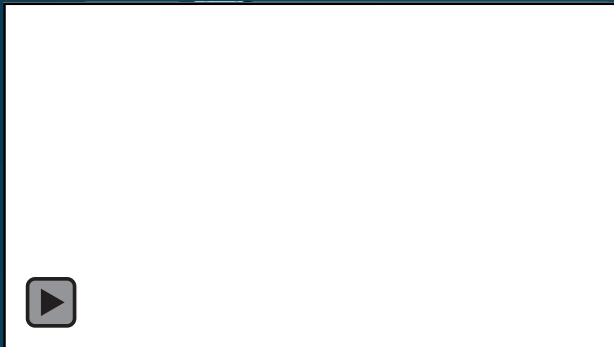
40 Ha in a Central Pivot Irrigation System

Is native grass seed production as a competitive and alternative agricultural activity for local producers?

Update on Black-tailed prairie dog conservation: Grassland restoration, health and demographic assessment - MEXICO

Restoration efforts

Mesquite removal in 100 Ha



Soil de-compaction in 250 Ha



Establish a grass seed bank in 60 Ha



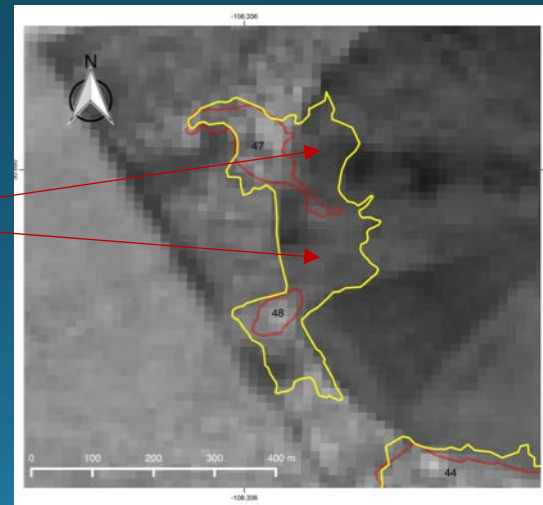
Soil water management (Keyline design) in 900 ha



Sustainable cattle management in 4,000 Ha

Update on Black-tailed prairie dog conservation: Grassland restoration, health and demographic assessment - MEXICO

Restoration strategies



Update on Black-tailed prairie dog conservation: Grassland restoration, health and demographic assessment - MEXICO

Restoration strategies



Hundreds of hectares of grasslands may be recovered

Update on Black-tailed prairie dog conservation: Grassland restoration, health and demographic assessment - MEXICO

Outreach



Janos; La Ultima Pradera

<https://vimeo.com/158643368/a809bd9ed2>

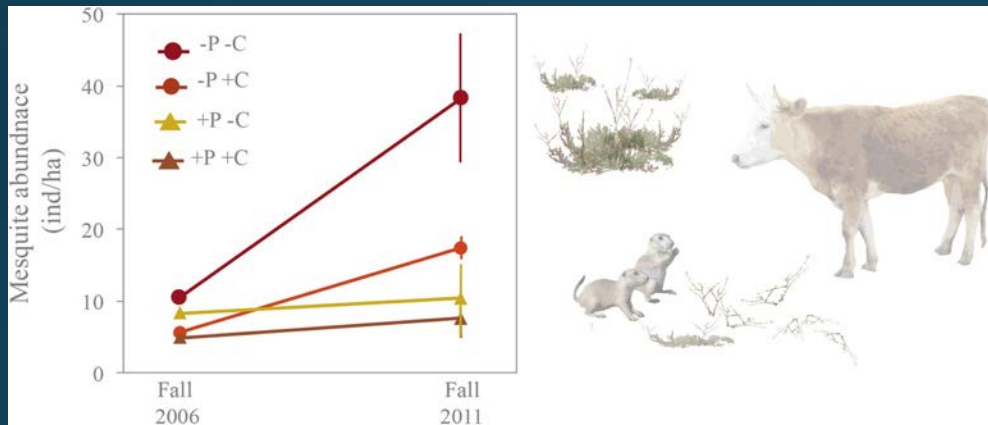
Update on Black-tailed prairie dog conservation: Grassland restoration, health and demographic assessment - MEXICO

Outreach



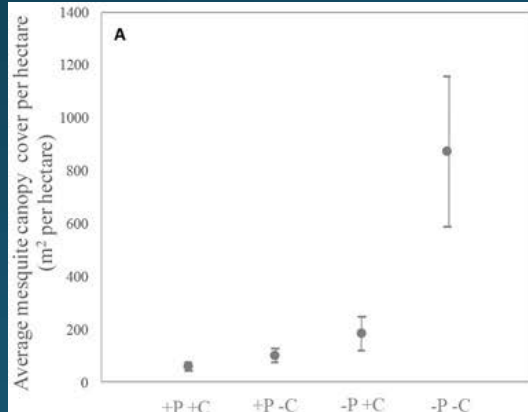
Update on Black-tailed prairie dog conservation: Grassland restoration, health and demographic assessment - MEXICO

Scientific publications (3)



Interactive Effects of Black-Tailed Prairie Dogs and Cattle on Shrub Encroachment in a Desert Grassland Ecosystem.

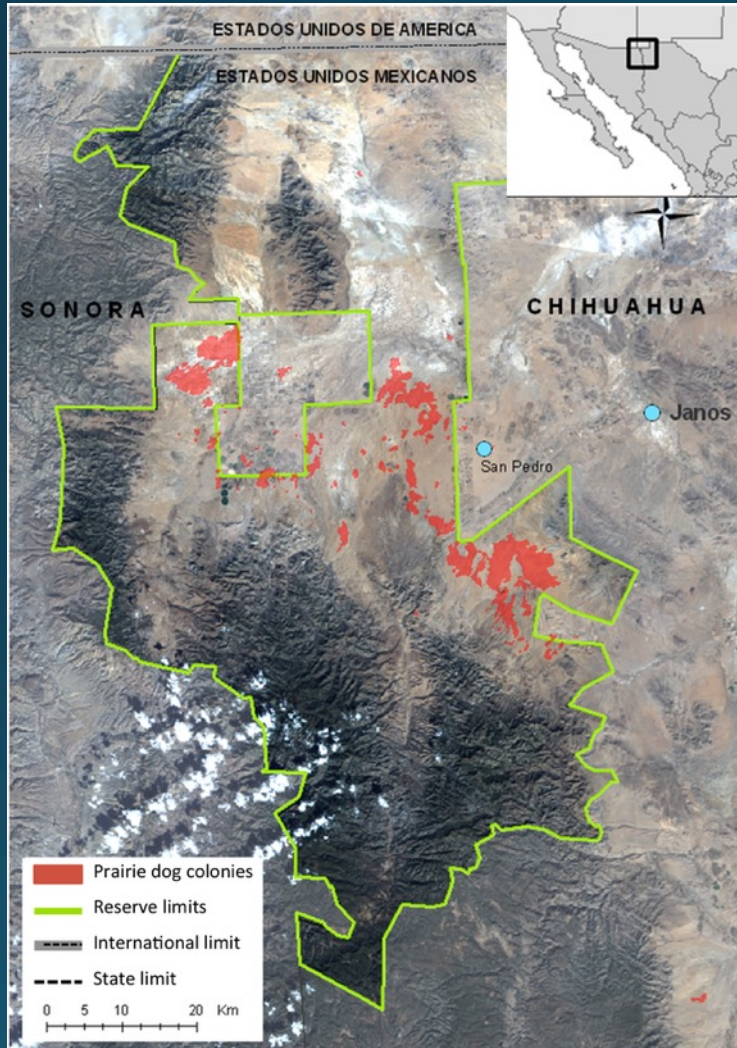
Plos ONE



Ponce-Guevara et al. 2016

Update on Black-tailed prairie dog conservation: Grassland restoration, health and demographic assessment - MEXICO

Project expansion



Medium size mammals



Update on Black-tailed prairie dog conservation: Grassland restoration, health
and demographic assessment - MEXICO

Project expansion



6/18/2015 6:47 PM ID:23



Update on Black-tailed prairie dog conservation: Grassland restoration, health and demographic assessment - MEXICO

Project expansion



Rodent community & Potential diseases

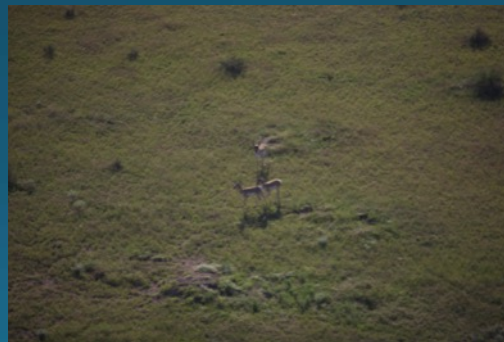


Update on Black-tailed prairie dog conservation: Grassland restoration, health and demographic assessment - MEXICO

Project expansion



Pronghorn Monitoring & Conservation Private propriety outside RBJ



Update on Black-tailed prairie dog conservation: Grassland restoration, health and demographic assessment - MEXICO

Special Requests

- Support from SAGARPA to promote successful sustainable cattle management programs throughout their incentive programs.
- Support from SAGARPA and SEMARNAT to obtain all necessary permits during 2016-17 (i.e. importation, exportation, capture).
- Start a network with other partners to share experiences and strength monitoring, conservation, restoration, and management programs.

Update on Black-tailed prairie dog conservation: Grassland restoration, health and demographic assessment - MEXICO



Thank you!

Eduardo Ponce
Ecología y Conservación de Fauna Silvestre
Instituto de Ecología
UNAM

eponce@ecologia.unam.mx



Heritage Fund



IMC VIDA SILVESTRE



Cuenca Los Ojos



CONACYT