

# 20 Years of the WWB-Mexico Program: Current Mexican Conservation Priorities and New Model Development of Binational Cooperation



# INECC

INSTITUTO NACIONAL  
DE ECOLOGÍA  
Y CAMBIO CLIMÁTICO

**Margarita Caso Chávez (INECC)**  
**Karina Santos del Prado Gasca (INECC)**  
**Alejandra Domínguez (INECC)**  
**Erwin Martí (INECC)**  
**Amanda Gonzales (USFWS)**



# Presentation Outline

- Program background.
- Program's outcomes.
- Towards the development of a new strategic framework.
- Information gathering.
- Challenges
- Recommendations from the Government of Mexico.

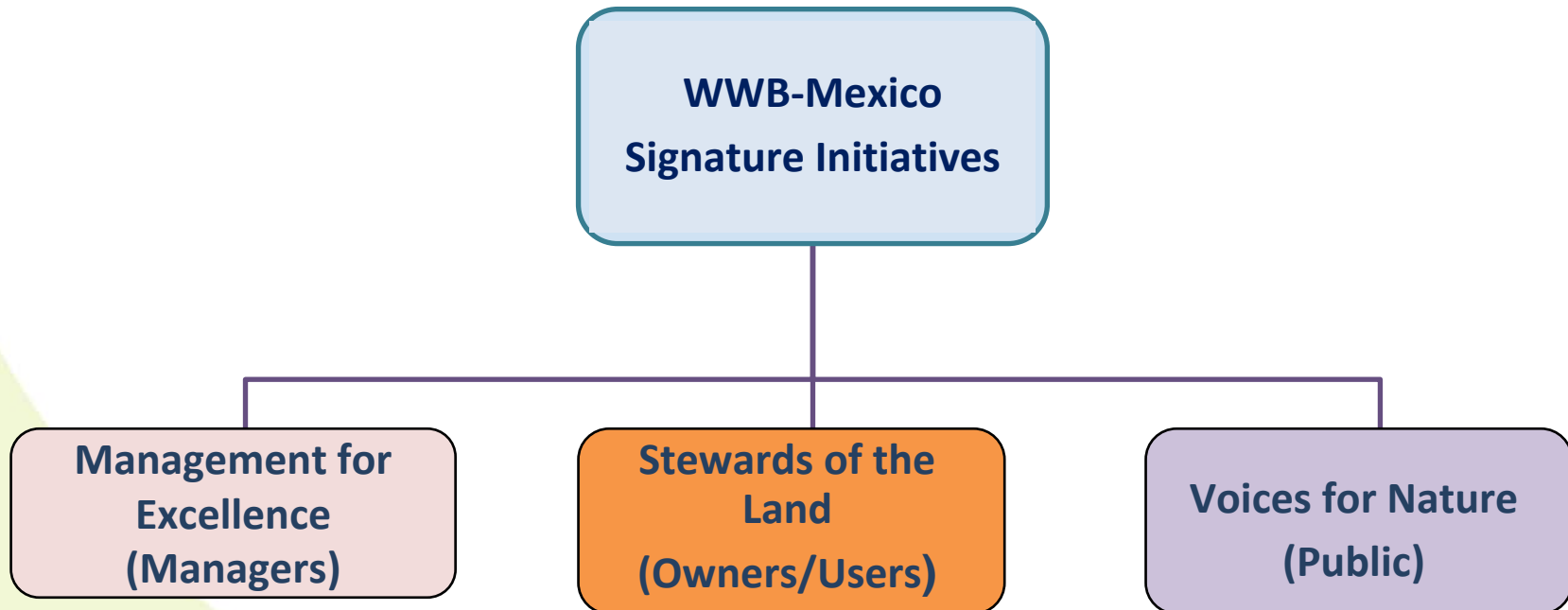




# Program Background

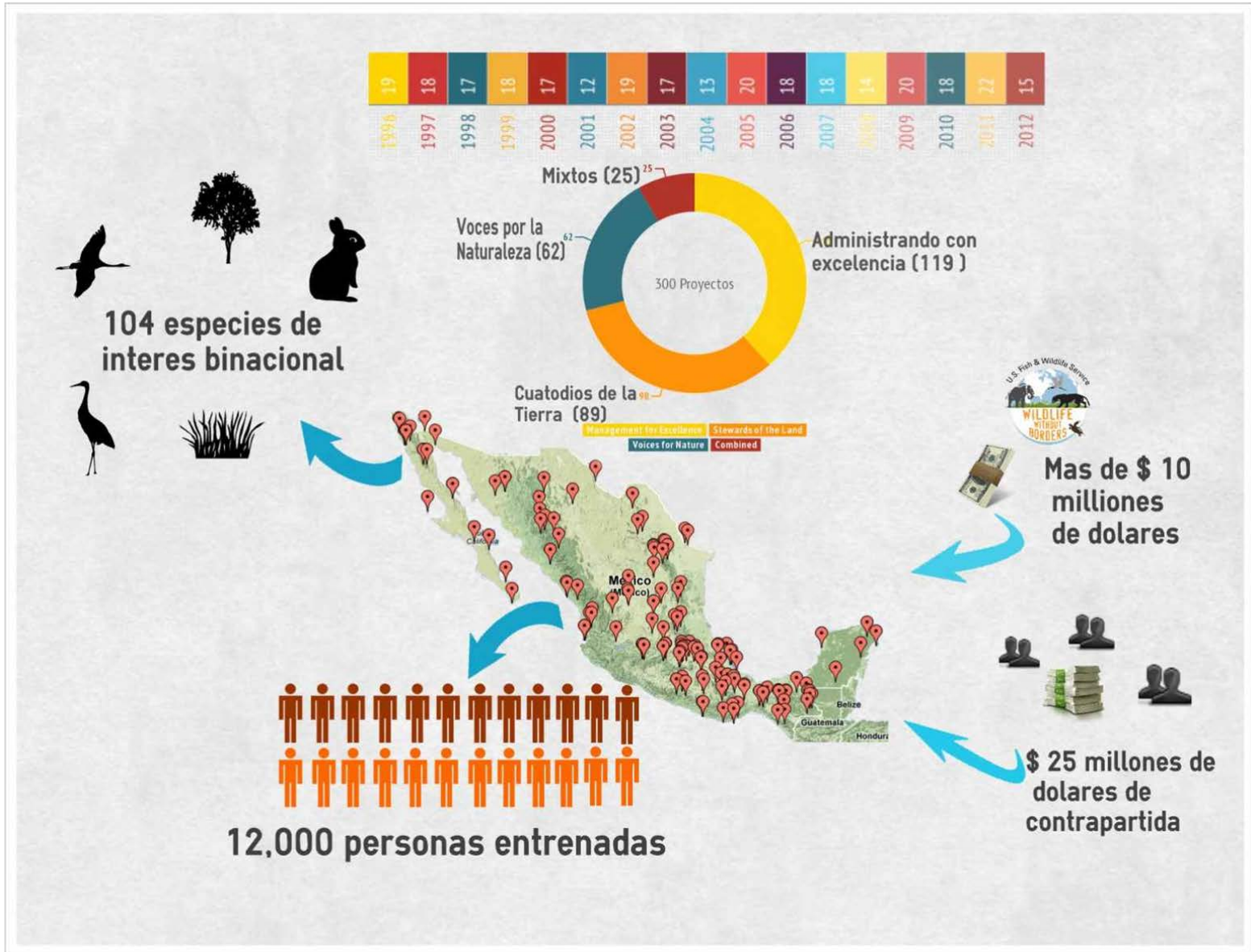


Created in 1994 by the US Fish and Wildlife Service and the Secretary of Environment and Natural Resources of Mexico, the Wildlife Without Borders – Mexico program (WWB – Mexico) represents a cooperative effort to conserve the biodiversity and the integrity of the natural wealth shared by these two nations.





# WWB-MX Outcomes







# A New Model of Binational Cooperation



1. By the end of 2013, WWB-Mexico was merged with WWB-LAC.
2. WWB-MX 20<sup>th</sup> Anniversary Celebration
3. Development of a new strategic framework with the purpose of:

1. Achieving a greater biodiversity conservation impact.
2. Supporting more targeted conservation actions.
3. Providing support to those conservation needs overlooked by other donors.





# Open Discussion Tables Participants

**SEMARNAT**  
SECRETARÍA DE  
MEDIO AMBIENTE  
Y RECURSOS NATURALES





# Challenges



## 1. What to conserve?

- Endangered Species
- Ecosystems
- NPAs, hotspots, priority regions,....

## 2. What conservation actions to implement?

- Threat oriented
- Reintroduction
- Restoration
- Education

## 3. Where are financial resources really needed?

- Financial gaps





# 1. Which Conservation Threat(s) Should *WWB-Mexico* Focus its Work On?



Using as a foundation the information available in the following policy documents:

- National Biodiversity Strategy and its action plan
- National Strategy on Invasive Species
- National Strategy for the Conservation and Sustainable Development of the Mexican Island Territory
- Mexican Strategy for Plant Conservation 2020-2030, bird monitoring and priority species, and
- CONANP`s 2040 Strategy 2040.

**We considered that WWB-MX should focus on addressing the following threats:**

- Land use change
- Invasive Species
- Illegal trade of wildlife
- Overexploitation of natural resources
- Climate Change





## 2. What are the conservation priorities of your agency?

### Priorities:

- Implementation of landscape level conservation actions.
- Development of economic alternatives for local communities to conserve biodiversity.
- Development human and institutional capacities to conserve biodiversity.
- Implementation of environmental education programs for all Mexicans.
- Comprehensive implementation of the multiple national policies and tools aimed at conserving the natural capital of Mexico.
- Effective management of natural protected areas in conjunction with the following programs:
  - Endangered Species Conservation Program (PROCER)
  - Species Management Plans (PACE)
  - Sustainable Development Program (PROCODES)
- Strengthening the technical and institutional capacity of PROFEPA to monitor, patrol, prevent and persecute wildlife crimes.
- Increase the ecosystems resilience to climate change.
- Promote the implementation of conservation actions to reduce the country's vulnerability to climate change.

### Factors that hinder the implementation of conservation strategies:

- Lack of financial resources
- Lack of continuity in terms of national policies.
- Lack of coordination between local, federal environmental agencies and other governments.
- Duplication of efforts and lack of coordination between authorities.
- Complexity of biodiversity issues (multiple threats operating at the same time)



### 3. How can *WWB-Mexico* better support the work of your agency in the future?



WWB-Mexico can support the work of SEMARNAT by:

- Linking the work of WWB-Mexico with the Trilateral Committee Working Tables and the Commission for Environmental Cooperation of North America.
- Linking the work of WWB-Mexico with already existing and future institutional efforts to development and build capacities.
- Continuing supporting projects aimed at building the human (professionals, local and rural communities, key stakeholders), technical and institutional capacity of Mexico to conserve its biodiversity and natural resources.
- Strengthening interagency coordination to combat illegal trade of wildlife.

**Do you consider that capacity building should continue as the center of *WWB-Mexico* activities, or is this no longer a relevant and contributing factor for the conservation of biodiversity in Mexico anymore?**

Yes! There is no any other international program, donor or agency focused on building the capacities of Mexico to conserve its biodiversity. WWB-Mexico contributes significantly to meeting the objectives of training and dissemination of policies for biodiversity conservation in Mexico (Example: community monitoring and citizen science).



#### 4. What funding gaps (which have not been filled by any other donor) could be covered by *WWB-Mexico* and thereby make a stronger impact on the conservation of biodiversity?



There are major funding gaps in the following areas:

- Specialized equipment and training for law enforcement related activities such as: processing laboratory samples for taxonomic identification of wild species, infrastructure and foreign specialists visits.
- Design and implementation of public policies and instruments that promote the financial sustainability of Mexico`s natural resources agencies, as well as, an economy of conservation, design and implementation of Environmental Impact Statements, cost-benefit analysis of infrastructure projects that affect priority conservation regions and removal or modification of perverse subsidies for the environment.



## 5. How can we together create successful multilateral cooperation mechanisms to enable the implementation of conservation actions in a coordinated, responsible, efficient and effective way?



- Systematize cooperation and financing efforts with a focus on cross-application and avoidance of duplication of tasks.
- Prevent conflicting policies and programs.
- Find commonalities with other fora, donors and programs such as the Trilateral Committee, the North American Cooperation in the Conservation of Protected Areas and Wildlife (NAWPA) and the Commission for Environmental Cooperation North America (CCA), giving priority to bilateral issues.
- Establish work schedules to short, medium and long term
- Implement mechanisms to evaluate the results.





# Recommendations



## Axis 1. Capacity Building:

- At the Institutional and human level (key actors of biodiversity conservation)
- Community management and monitoring of wildlife.
- Citizen science



¡La red mundial de iNaturalist pasó 1,000,000 de observaciones!

Conabio » Monitoreo de especies - Presentación

Un proyecto conjunto, entre Conabio-Nabci, el Laboratorio de Ornitología Cornell y Audubon

Registra las aves que observes en cualquier lugar de México.

Juntos conformaremos una base de datos que ayudará a su conocimiento y conservación.

**aVerAves**  
versión 2

Diseño de fácil navegación  
Más herramientas para ingresar datos de manera sencilla  
Nuevas funciones que permiten hacer análisis de datos



# Recommendations



## Axis 2. Integrated landscape management

### –Integrated landscape management

- Conservation, restoration, species and ecosystems recovery, ecosystems connectivity and treats biodiversity attends
- Community management ad monitoring.
- Citizen science

### –Suitable use of resources.

- Alternative production strategies in order to reduce threats

### – Ecosystem based adaptation.

- Ecosystem services conservation





## CONTACTS & INFORMATION:

### USFWS:

Amanda Gonzales

Program Officer, WWB – Mexico

[Amanda\\_Gonzales@fws.gov](mailto:Amanda_Gonzales@fws.gov)

### INECC:

Margarita Caso Chavez

Directora de Vulnerabilidad y Adaptación  
al Cambio Climático

National Institute of Ecology and Climate  
Change (INECC)

[margarita.caso@inecc.gob.mx](mailto:margarita.caso@inecc.gob.mx)