

Sustainable Standards for Bird Conservation



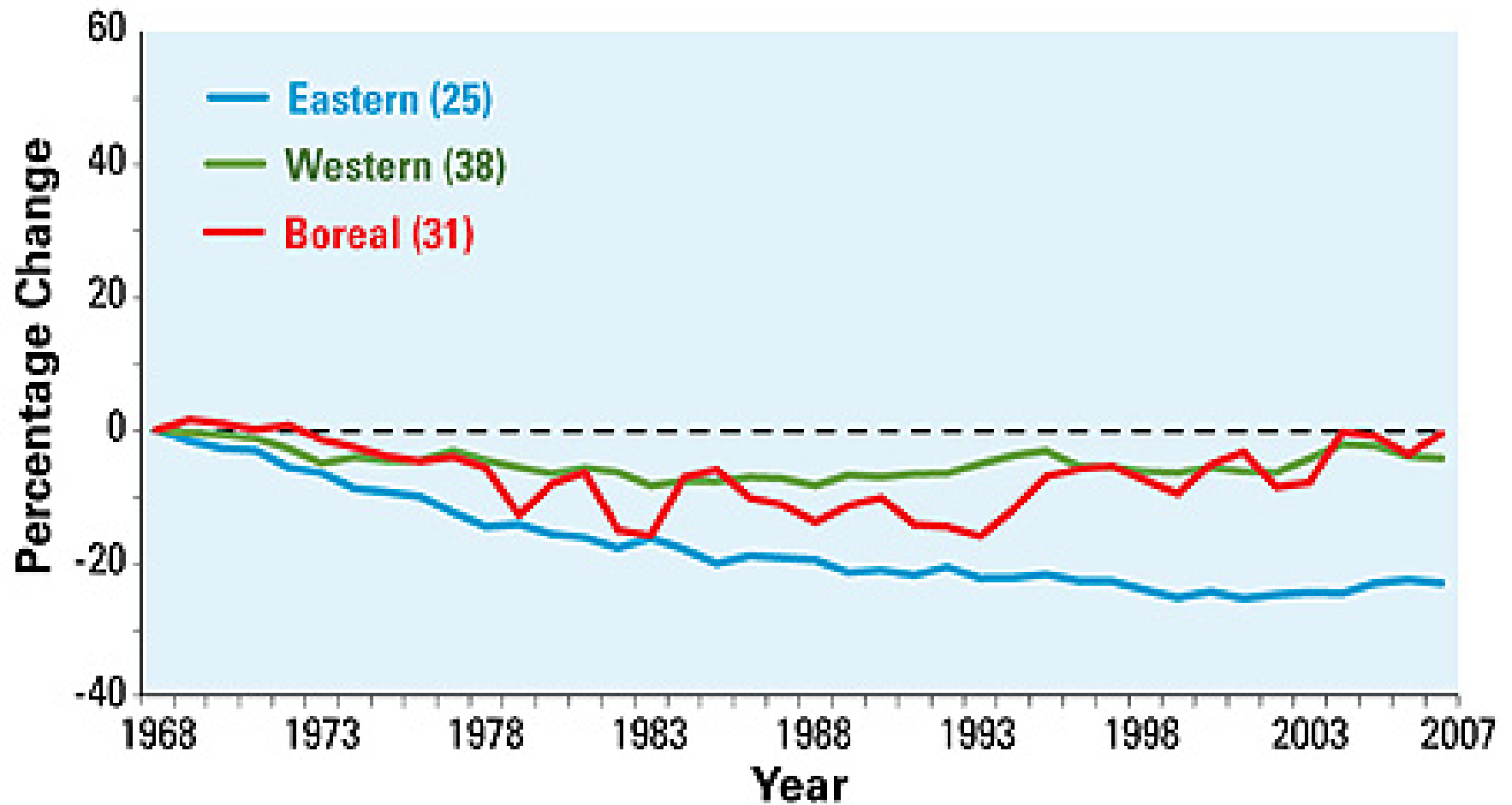


The next 15 minutes of your life...

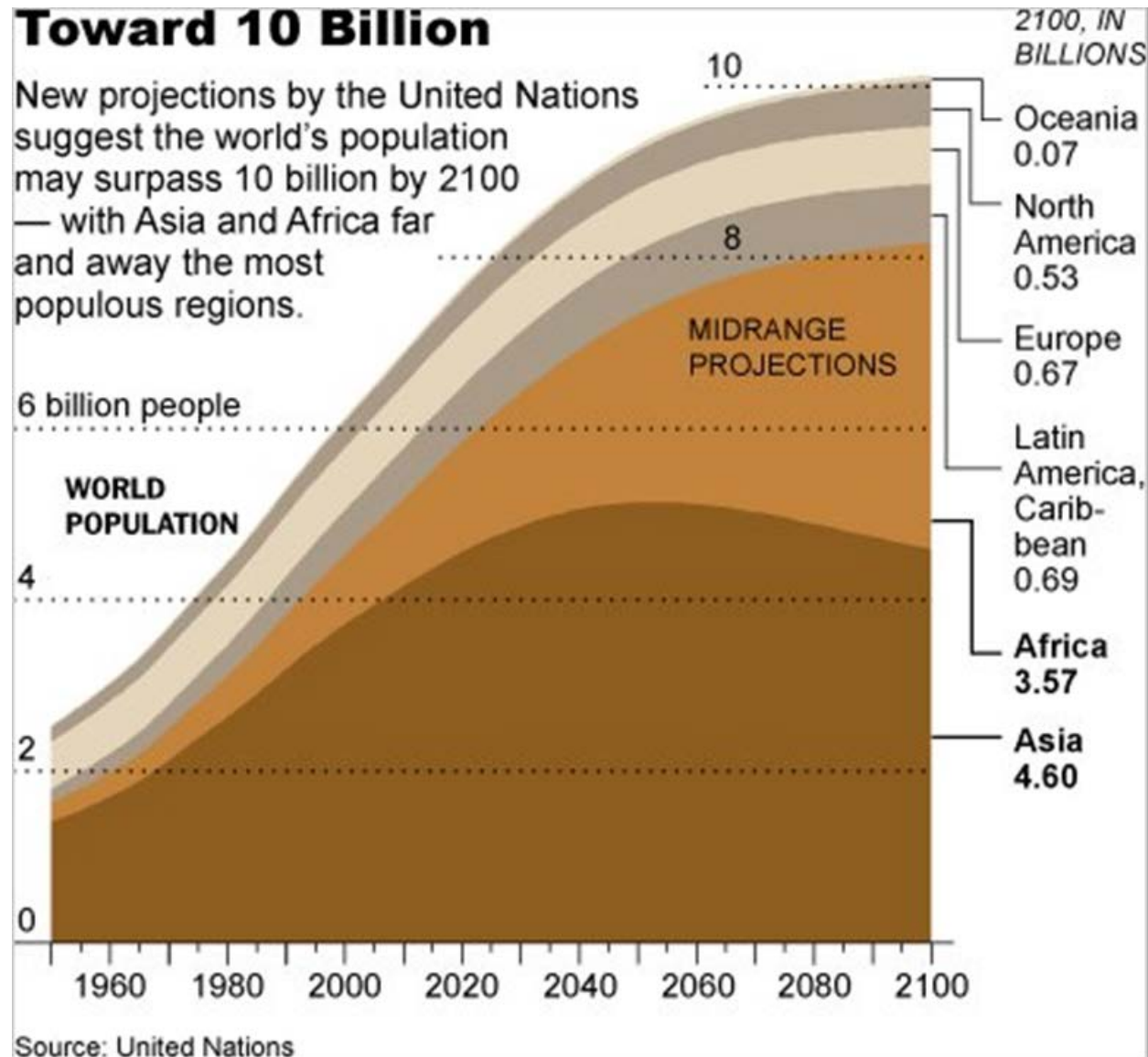
- Systemic threats
- Bird-safe standards for Trinational consideration
- Next steps



Birds in Decline

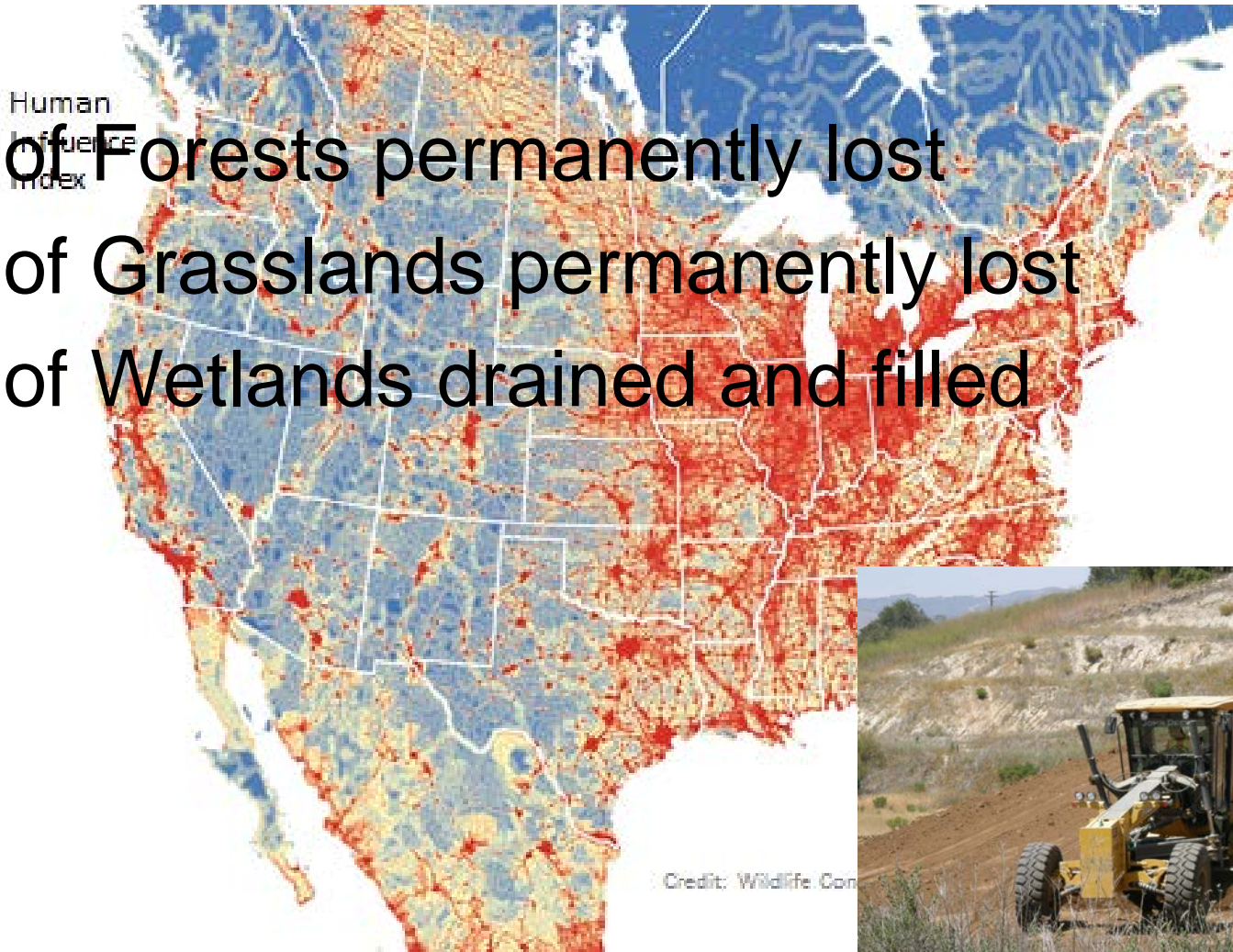


A Human Altered Landscape

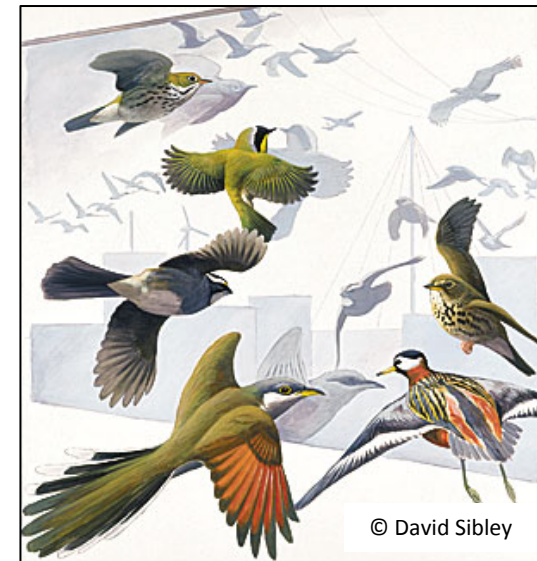
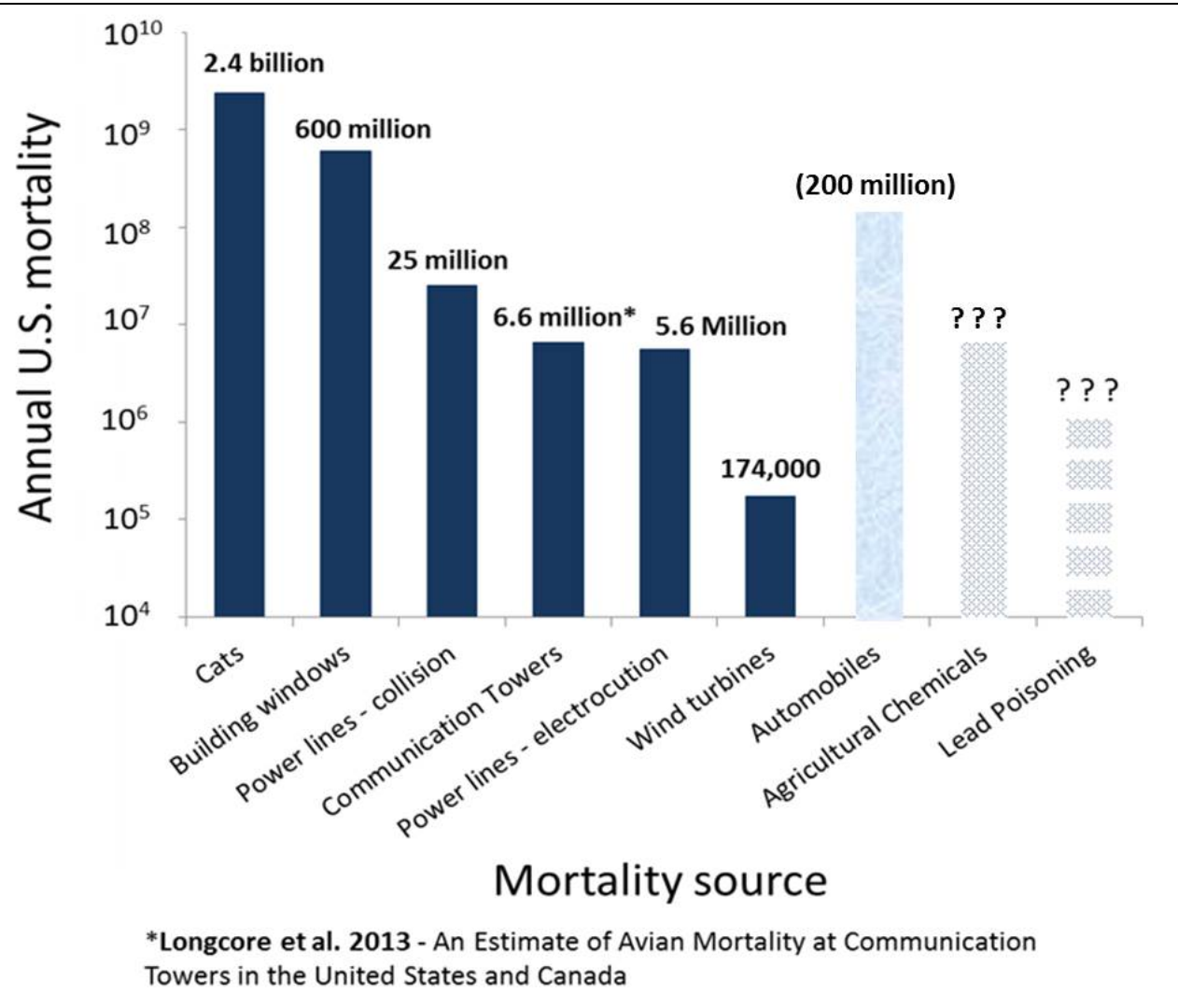


Habitat Loss

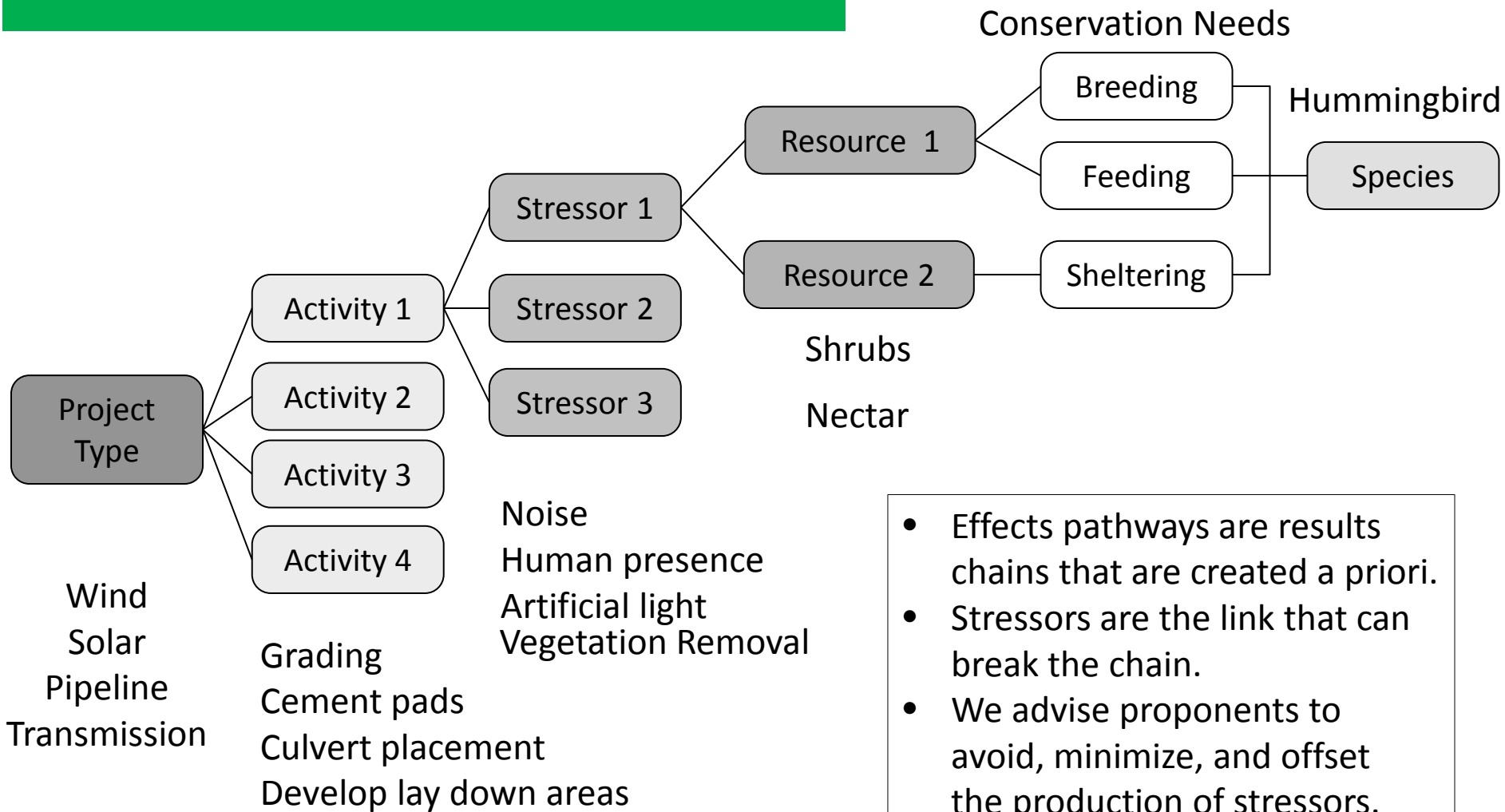
- 85% of Forests permanently lost
- 95% of Grasslands permanently lost
- 50% of Wetlands drained and filled



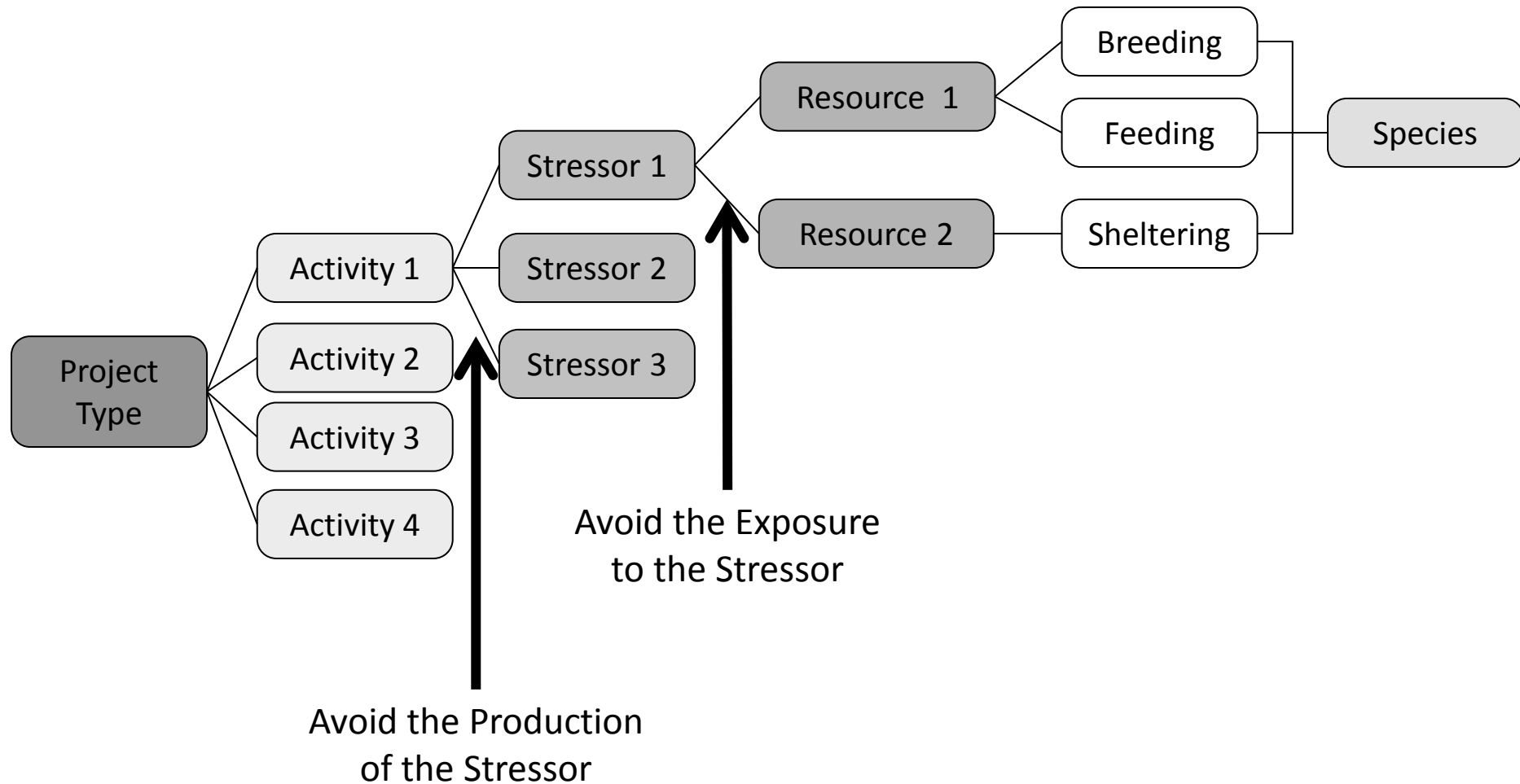
Anthropogenic Impacts



EFFECTS PATHWAY



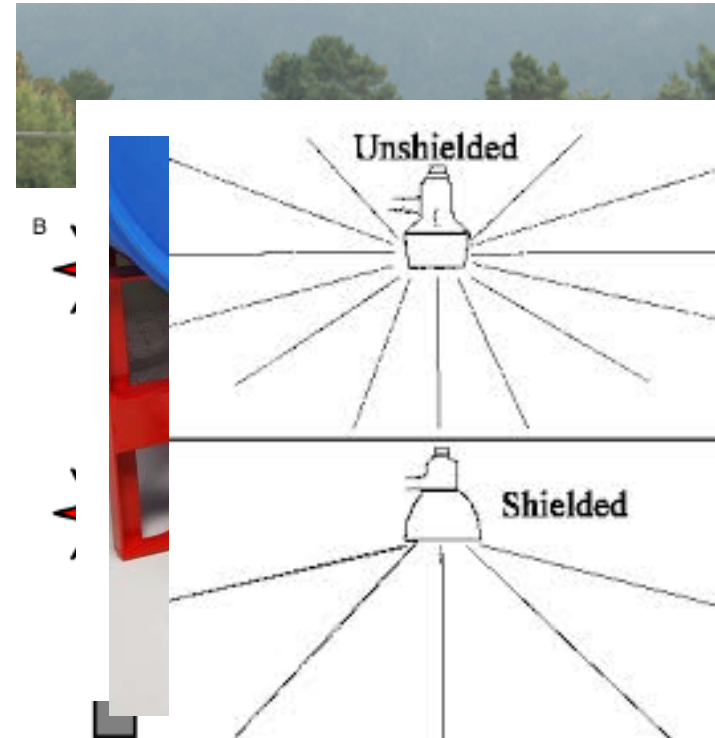
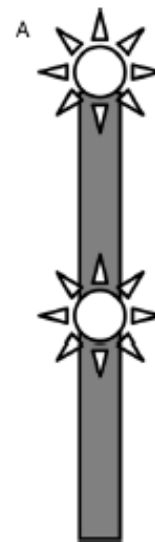
Using Conservation Measures



Conservation Standards

Currently exist for:

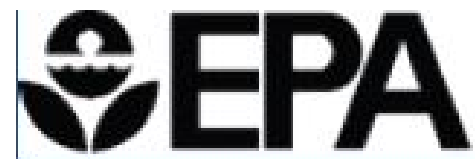
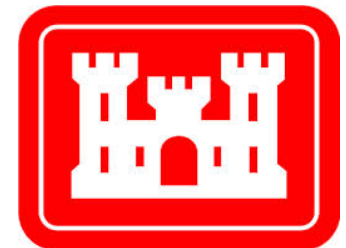
- Powerlines
- Communication Towers
- Oil Pits
- Burners, flares, and vent stacks
- Bollards and Open Pipes
- Spill containment
- Outdoor Lighting
- Fisheries Operations
- Building Glass



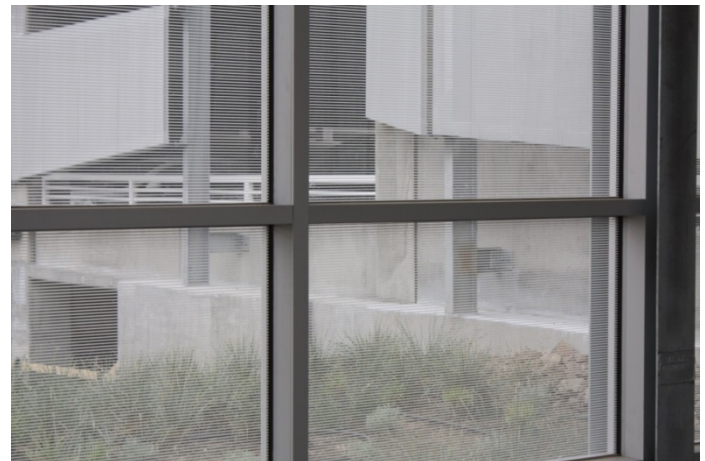
Who is willing and able to implement?



U.S. Customs and Border Protection



Standard Conservation Measures Building Glass











Living With Birds

This new shelter has been modified with a window film to reduce glare and improve visibility. The transparent and reflective properties of glass make it difficult for birds to flight in the vicinity of the shelter. Millions of birds die every year in the United States as a result of glass collisions. The film being used here makes the glass visible to birds without sacrificing your ability to see an approaching shuttle. UACB, shares its research campus with more than 80 bird species.





Anthropogenic Impacts: Urbanization and Agriculture



Anthropogenic Impacts: Cats



*Feral and free-ranging cats kill an average of **2.4 billion birds** per year in the U.S.*

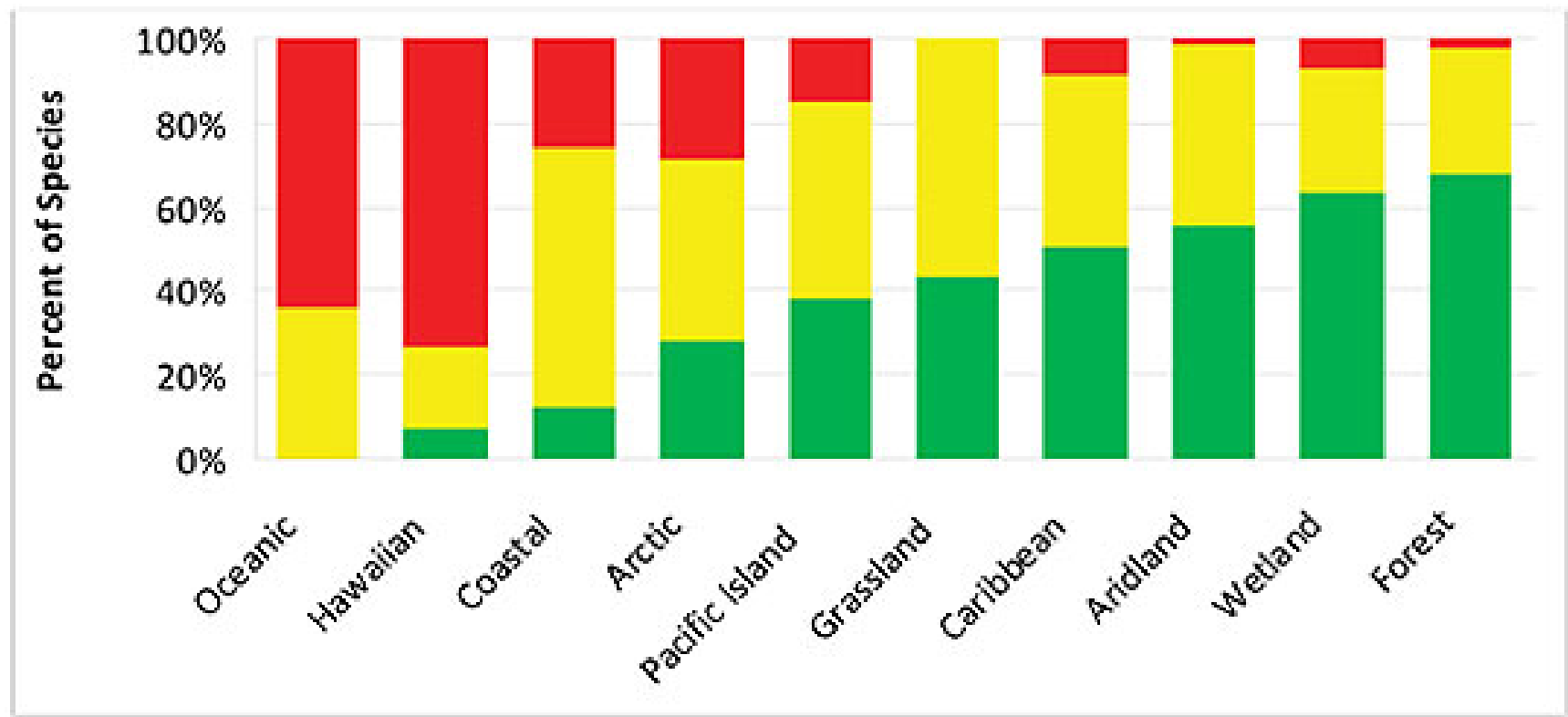


Anthropogenic Impacts: Vehicles

*Collisions with vehicles kill an average of **200 million birds** each year.*



Effects of Climate Change



Anthropogenic Impacts: Unknown Estimates



Solar Energy Technologies



Anthropogenic Impacts: Pesticides and Lead Poisoning

*Pesticide applications kill an average of **72 million birds** each year.*



Anthropogenic Impacts: Wind Turbines

*Approximately
174,000 – 573,000
birds* are killed by
wind turbines per year
in the U.S.*



Anthropogenic Impacts: Fisheries By-catch

*Entanglement has significant global impacts
on seabird populations.*



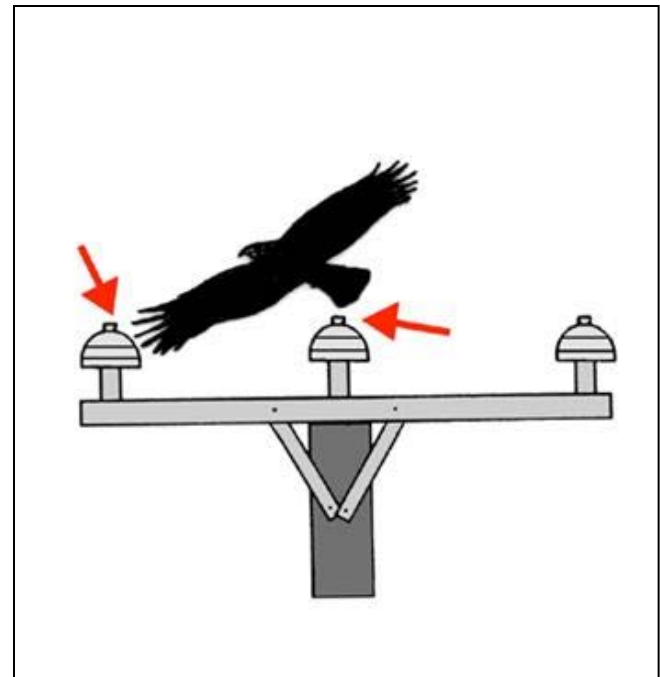
Anthropogenic Impacts: Invasive Species



Anthropogenic Impacts: Powerlines



Collisions with and Electrocutions on powerlines kill an average of 30 million birds each year.



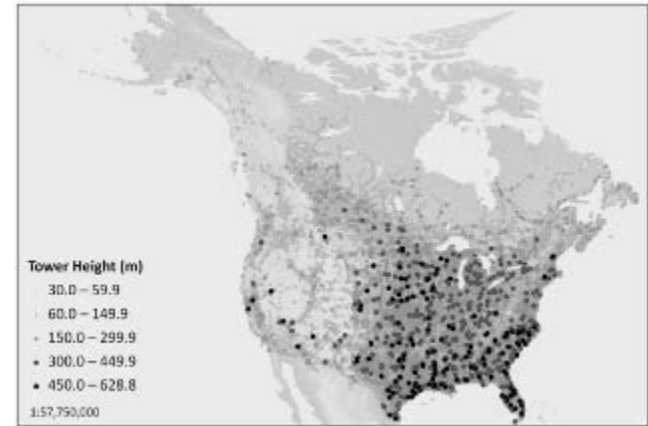
Anthropogenic Impacts: Building Glass

*Collisions with buildings kill an average of **600 million birds** each year.*

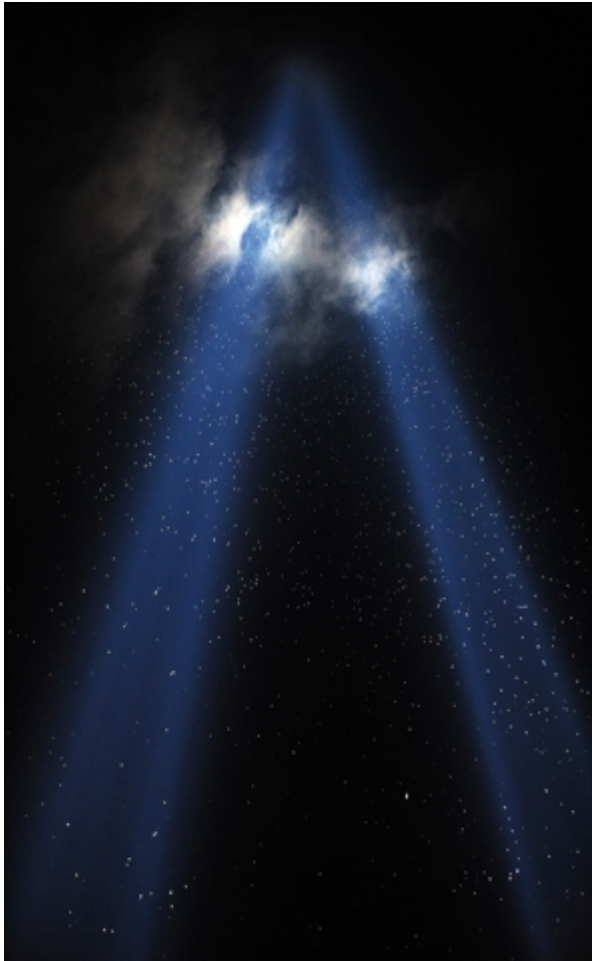


Anthropogenic Impacts: Communication Towers

*Collisions with guy-wired communication towers kill an average of **6.6 million birds** each year.*



Anthropogenic Impacts: Pollution



Chris Jordan